

Lake Bloomington

Rules and Regulations



More information at: www.bloomingtonil.gov/lakebloomington

Lake Bloomington is a 635-acre reservoir with 18.5 miles of shoreline that was built in 1929 to serve as a source of potable water for the City of Bloomington and several nearby communities. Lake Bloomington also has public parks, youth camps, and over 220 residences. Boating, skiing, and fishing are allowed on the lake. The City of Bloomington's Water Department manages Lake Bloomington and has established rules and regulations for the lake and its facilities so that the various activities coexist as safely and with as little conflict as possible.

To get to Lake Bloomington from Interstate 39, take Exit 8 and drive east on E 2500 North Road for 3.6 miles to PJ Keller Highway. Then, either go straight at the four-way stop (look for the blue Lake Bloomington sign) or turn left and go 0.5 miles to Park View Lane and turn right (look for the blue Lake Bloomington sign and stone/iron gate).

Fishing

Walleye, Largemouth Bass, Smallmouth Bass, Hybrid Striped Bass, Northern Pike, Crappie, Bluegill, and Catfish can be caught at Lake Bloomington. Fishing is open to the public year-round. Ice fishing can be dangerous. Please use caution. The City of Bloomington is not responsible for any accidents or injuries that may occur. When fishing Lake Bloomington, anglers must comply with the following rules and regulations:

1. Anyone 16 years of age or older must have a valid Illinois Fishing License.
2. Two-pole and line fishing only. No Jugs or Trot lines.
3. Fishing from a boat around a private dock is prohibited when someone is on it or swimming near it. Fishing from a boat is also prohibited between sunset and sunrise.
4. No littering.

For current fishing regulations, please visit the Illinois Department of Natural Resources website at ifishillinois.org. Size and creel limits are also posted at the Lake Bloomington Parks Office.



Friends of EverBloom provides a free fishing pole rental program available to all ages. For more information, stop at the office or call 309-434-2161.

Parks

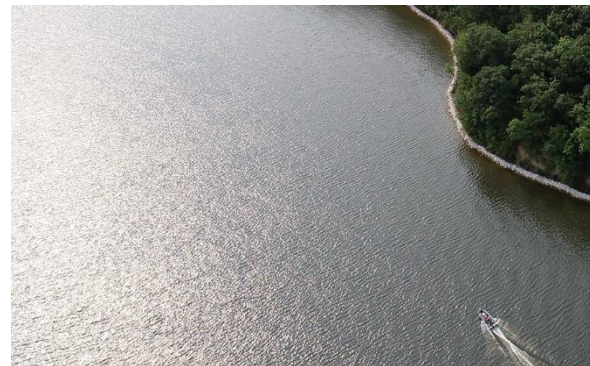
The City of Bloomington maintains several park areas in various locations around Lake Bloomington for general day use. Picnic tables, shelters, grills, and playground equipment are all available on a first come, first serve basis. Park areas are open from 6 a.m. to 10 p.m. daily. When using any of the Public Use Areas at Lake Bloomington, the following rules apply:

1. No swimming or wading.
2. Fires are permitted in grills only. No open fires.
3. Alcoholic beverages are prohibited.
4. No overnight camping.
5. No vehicles allowed off roadway.
6. No littering.

Boating

Recreational boating is permitted at Lake Bloomington. The boat ramp is located in Hubbard Park and can be reached by taking County Road 1750 East to Park View Lane. Turn East on Park View which will take you directly to the boat ramp and parking. Boaters must comply with the following provisions:

1. All boats must have a current State Boating License and City of Bloomington Boat Permit. To obtain a City of Bloomington Boat Permit, all applicants are required to show proof of watercraft liability insurance, in the amount of at least \$100,000.00, and evidence of current State Registration. Additional information and instructions on how to complete the form and submit payment and proof of liability insurance are provided on the Lake Bloomington Boat Permit Application.
2. Boats operating on the Lake must carry all State required equipment. (Personal flotation devices, fire extinguisher, whistle or horn, etc.) And obey all State of Illinois regulations.
3. Maximum 40 horsepower limit.
4. Maximum speed limit of 25 mph.
5. All boats must obey all posted "NO WAKE" areas. The entire Lake is "NO WAKE" from ½ hour after sunset until 7:00 am.
6. Racing is prohibited.
7. During Skiing hours (noon - 7:00pm) all boats operating in the area open to skiing shall operate in a counterclockwise pattern and shall make all turns counterclockwise. (see skiing)
8. All motorized boats must yield to any sail-powered or muscle-powered craft.
9. All passengers must be properly seated when underway.
10. All passengers under age 13 must wear an approved personal flotation device while the boat is underway.
11. Operating a boat while UNDER THE INFLUENCE OF ALCOHOL OR DRUGS IS PROHIBITED.
12. Careless or reckless operation of any type will not be tolerated.
13. No jet skis, jet-propelled, or air driven craft of any type are allowed.
14. Swimming from boats is prohibited.



Skiing

Recreational skiing is permitted at Lake Bloomington. This includes tubing or related activities. Skiers must comply with the following provisions:

1. Skiing is allowed from noon to 7:00pm only.
2. Skiers must wear approved jacket type personal flotation device.
3. At least 2 people qualified to operate the boat must be aboard while pulling a skier. One to act as an observer.
4. Skiing within 100 ft of any dock, shore, raft, buoy, or other watercraft is prohibited.
5. Boats may pull only 1 person at a time.
6. Skiers must start from the water and not from the shore or docks.
7. Only the person actually skiing or preparing to ski shall be in the water at any time.

Lake Bloomington Contact Information

25466 Davis Lodge Road

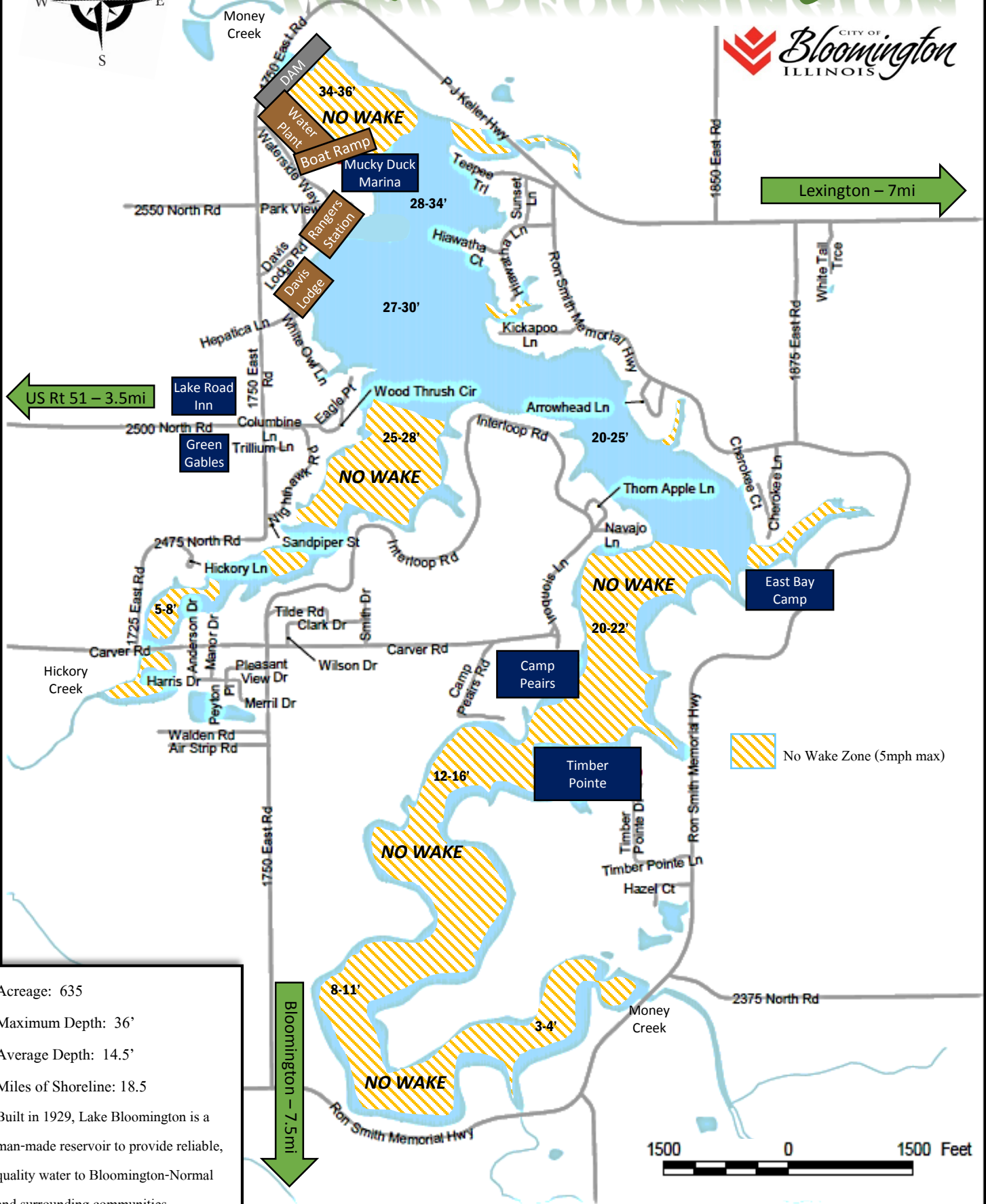
Hudson, Illinois 61748

Office Phone: 309-434-2431

Emergencies: 9-1-1

For more information on Lake Bloomington, visit www.bloomingtonil.gov/lakebloomington, email water@cityblm.org, or call 309-434-2400 during regular business hours, which are between 7:30 a.m. and 4:30 p.m., Monday through Friday. For urgent calls after hours, call the Bloomington Police Department at 309-820-8888.

Lake Bloomington



Lexington – 7mi

US Rt 51 – 3.5mi

Bloomington – 7.5mi

Acreage: 635
 Maximum Depth: 36'
 Average Depth: 14.5'
 Miles of Shoreline: 18.5
 Built in 1929, Lake Bloomington is a man-made reservoir to provide reliable, quality water to Bloomington-Normal and surrounding communities.

No Wake Zone (5mph max)

1500 0 1500 Feet